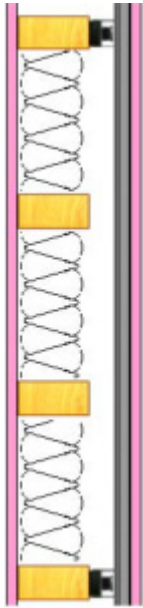


Resilient Sound Isolation Clips (RSIC-1) Assembly Examples

WOOD ASSEMBLIES (TYPICAL)



DIRECT TO WOOD STUD

- 5/8" GYPSUM
- 7/8" x 25 guage furring Channel @ 24" O.C.
- RISC-1 clip at 48" O.C.
- 2X4' wood studs @ 16" O.C.
- 3.5" unfaced fiberglass insulation
- 5/8" GYPSUM

STC = 55



DIRECT TO WOOD STUD

- 5/8" GYPSUM
- 7/8" x 25 guage furring Channel @ 24" O.C.
- RISC-1 clip @ max 24" x 48" O.C.
- 2X4' wood studs @ 16" O.C.
- 6" fiberglass batt insulation
- 5/8" GYPSUM

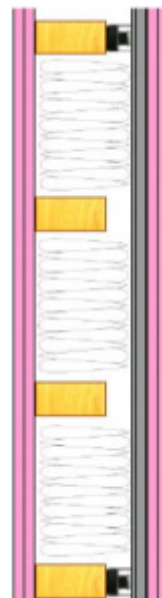
STC = 58



DIRECT TO WOOD STUD

- 5/8" GYPSUM
- 7/8" x 25 guage furring Channel @ 24" O.C.
- RISC-1 clip at 48" O.C.
- 2X4' wood studs @ 16" O.C.
- 6" unfaced fiberglass insulation
- 5/8" GYPSUM

STC = 56



DIRECT TO WOOD STUD

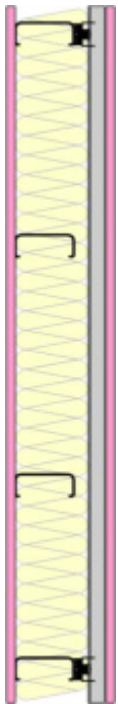
- (2) layers 5/8" GYPSUM
- 7/8" x 25 guage furring Channel @ 24" O.C.
- RISC-1 clip at 48" O.C.
- 2X4' wood studs @ 16" O.C.
- 6" unfaced fiberglass insulation
- (2) layers 5/8" GYPSUM

STC = 62



Resilient Sound Isolation Clips (RSIC-1) Assembly Examples

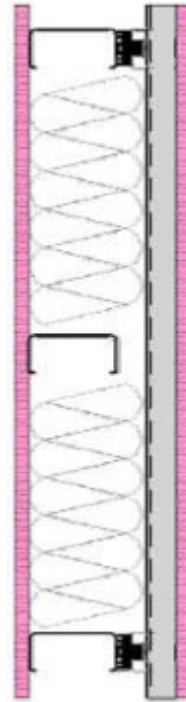
STEEL ASSEMBLIES (TYPICAL)



DIRECT TO STEEL STUD

- 5/8" GYPSUM
- 7/8" x 25 guage furring Channel
- RISC-1 clip at 48" O.C.
- 2.5" Steel Stud @ 16" O.C.
- 3.5" fiberglass insulation
- 5/8" GYPSUM

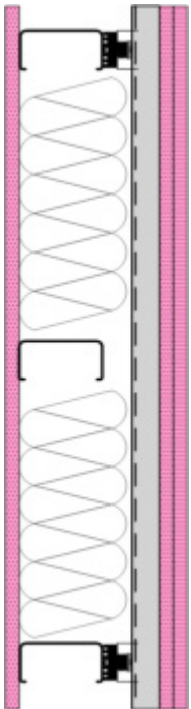
STC = 56



DIRECT TO STEEL STUD

- 5/8" GYPSUM
- 7/8" x 25 guage furring Channel
- RISC-1 clip at 48" O.C.
- 3.5" Steel Stud @ 24" O.C.
- 5.5" fiberglass insulation
- 5/8" GYPSUM

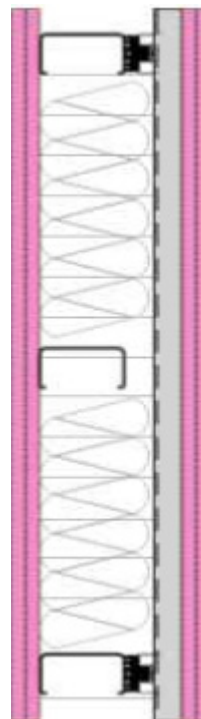
STC = 58



DIRECT TO STEEL STUD

- (2) layers 5/8" GYPSUM
- 7/8" x 25 guage furring Channel
- RISC-1 clip at 48" O.C.
- 3.5" Steel Stud @ 24" O.C.
- 5.5" fiberglass insulation
- 5/8" GYPSUM

STC = 61



DIRECT TO STEEL STUD

- (2) layers 5/8" GYPSUM
- 7/8" x 25 guage furring Channel
- RISC-1 clip at 48" O.C.
- 3.5" Steel Stud @ 24" O.C.
- 5.5" fiberglass insulation
- (2) layers 5/8" GYPSUM

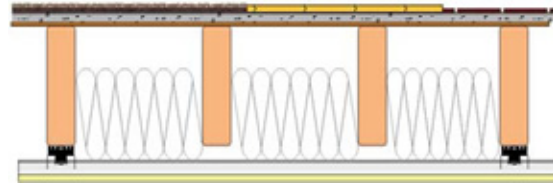
STC = 64



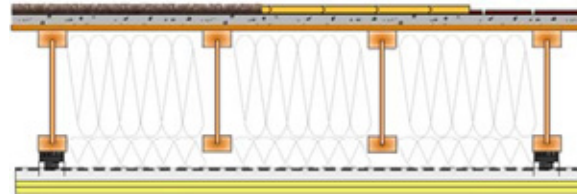
Resilient Sound Isolation Clips (RSIC-1) Assembly Examples

RSIC-1 WOOD/FLOOR CEILING ASSEMBLIES 1 & 2 HOUR

Carpet	STC 61	IIC 74
Hard Wood	STC 61	IIC 55
Tile	STC 61	IIC 53
(Open Web Truss)		

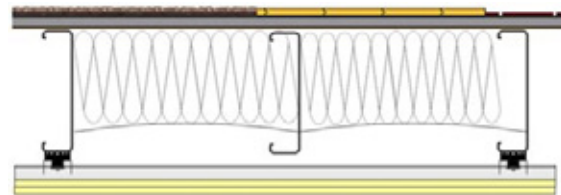


Carpet	STC 61	IIC 74
*Hard Wood	STC 61	FIIC 60
Tile	STC 61	FIIC 63
* No Acoustical Underlayment		
Installed F = Indicates Field Test		



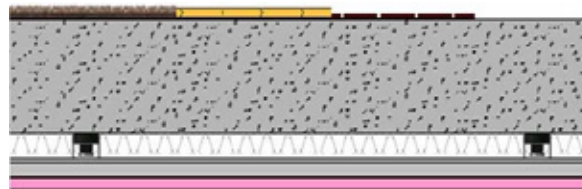
RSIC-1 STEEL CEILING ASSEMBLIES 1 & 2 HOUR

Carpet	STC 60	IIC 70
Hard Wood	STC 60	IIC 60
Tile	STC 60	FIIC 59
F = Indicates Field Test		



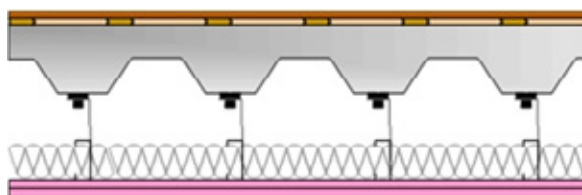
RSIC-1 CONCRETE CEILING ASSEMBLIES 1 & 2 HOUR

Carpet	STC 60	FIIC 84
Hard Wood	STC 60	FIIC 74
Tile	STC 60	FIIC 70
Bare	STC 60	FIIC 51
F = Indicates Field Test		



RSIC-1 STEEL & CONCRETE CEILING ASSEMBLIES 1 & 2 HOUR

Hard Wood	STC 60	FIIC 74
F = Indicates Field Test		



Resilient Sound Isolation Clips (RSIC-1) Assembly Examples

RSIC-1 WOOD/FLOOR CEILING ASSEMBLIES 1 & 2 HOUR

The Lowest Cost Floor-Ceiling System using RSIC technology.

Our research team has developed a breakthrough Floor-Ceiling design which eliminates the need for Light Weight Gypsum Concrete and Acoustical Mats, while exceeding code for both Fire and Sound.

<p> UL L502, L513, L514, L516, L325, L569, L590, L593</p> <p>RSIC-1 Ceramic Tile system w/o Light Weight Gypsum Concrete</p> <p>Title: STC 57 IIC 56 RAL IN08-018</p>	
	
<p> UL L502, L513, L514, L516, L325, L569, L590, L593</p> <p>RSIC-1 Vinyl system w/o Light Weight Gypsum Concrete</p> <p>Title: STC 57 IIC 52 RAL IN08-016</p>	
	
<p> UL L502, L513, L514, L516, L325, L569, L590, L593</p> <p>RSIC-1 Laminate Wood system w/o Light Weight Gypsum Concrete</p> <p>Title: STC 57 IIC 52 RAL IN08-016</p>	
	
<p> UL L502, L513, L514, L516, L325, L569, L590, L593</p> <p>RSIC-1 Carpet system w/o Light Weight Gypsum Concrete</p> <p>Title: STC 57 IIC 77 RAL IN08-017</p>	
	