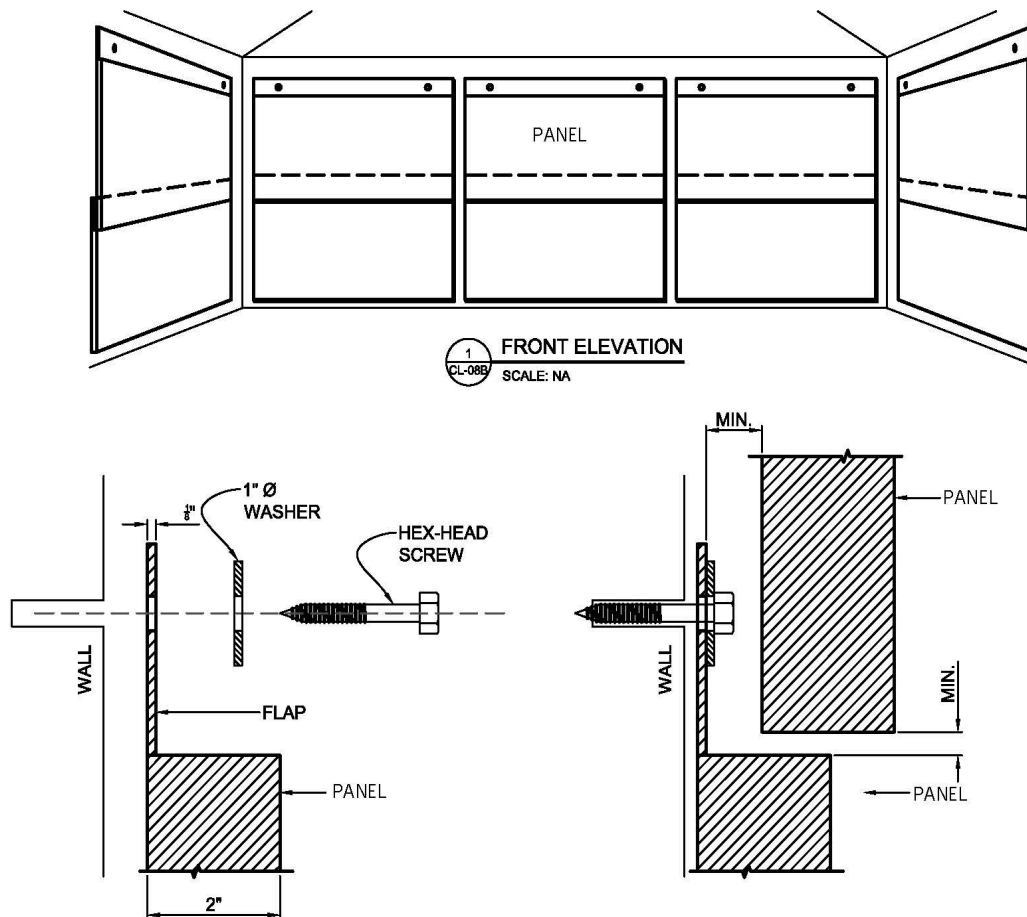


## ALPHAENVIRO™ PVC/RIPSTOP WALL PANELS



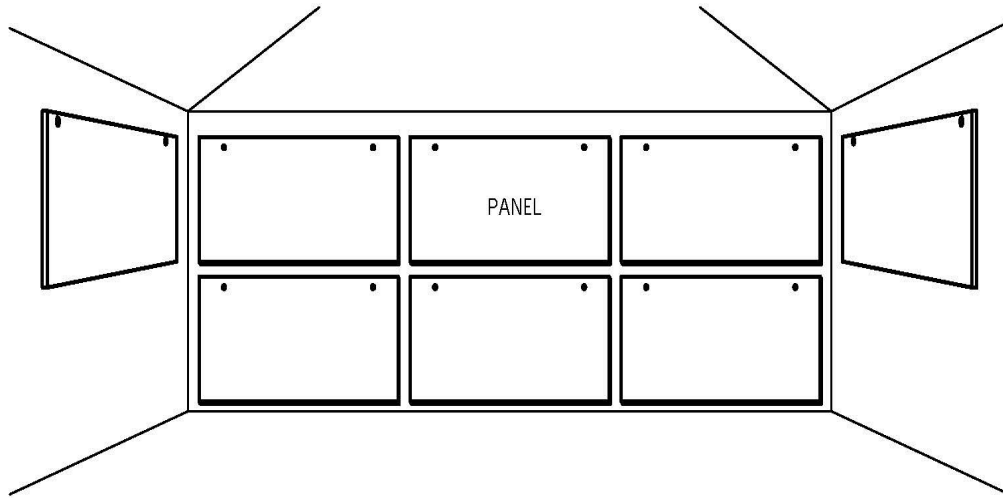
NOTE:  
DRAWINGS AND DETAILS ARE INTENDED TO PROVIDE GENERIC  
INSTALLATION GUIDELINES ONLY. ACTUAL FIELD CONDITIONS MAY VARY  
AND NEED TO BE CONFIRMED BY OTHERS.

A  
CL-089

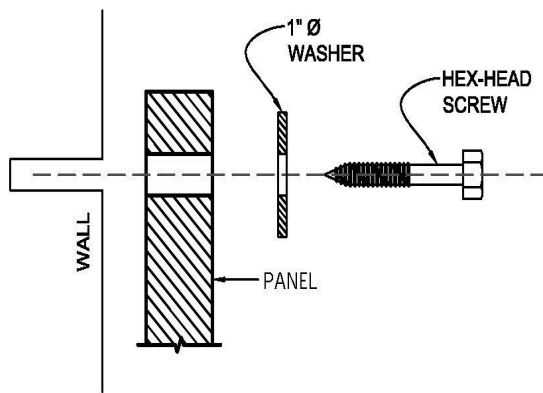
ATTACHMENT DETAILS  
SCALE: NA

NOTE:

1) DO NOT OVER TIGHTEN HARDWARE. DOING SO CAN CAUSE BOTTOM OF PANEL TO KICK OUT.



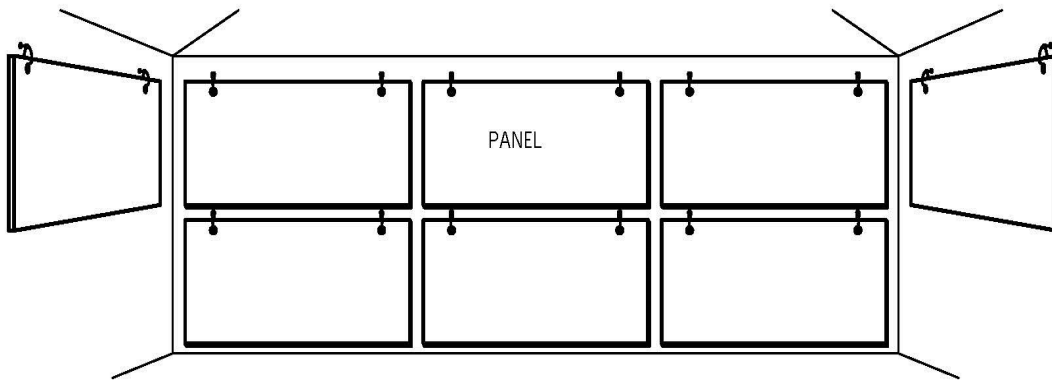
1 FRONT ELEVATION  
CL-07 SCALE: NA



A ATTACHMENT DETAIL  
CL-07 SCALE: NA

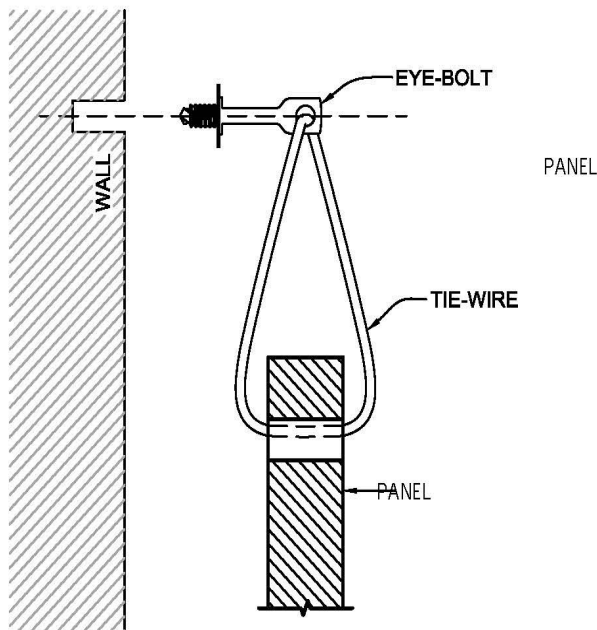
NOTE:  
DRAWINGS AND DETAILS ARE INTENDED TO PROVIDE GENERIC  
INSTALLATION GUIDELINES ONLY. ACTUAL FIELD CONDITIONS MAY VARY  
AND NEED TO BE CONFIRMED BY OTHERS.

NOTE:  
1) DO NOT OVER TIGHTEN HARDWARE. DOING SO CAN CAUSE BOTTOM OF PANEL TO KICK OUT.



1  
CL-08  
**FRONT ELEVATION**  
SCALE: NA

NOTE: DRAWINGS AND DETAILS ARE INTENDED TO PROVIDE GENERIC INSTALLATION GUIDELINES ONLY. ACTUAL FIELD CONDITIONS MAY VARY AND NEED TO BE CONFIRMED BY OTHERS.



A  
CL-08  
**ATTACHMENT DETAIL**  
SCALE: NA

**NOTES:**

- 1) ATTACHED TO EYEBOLTS WITH AIR SPACE FOR INCREASED ACOUSTICAL ABSORPTION. ATTACHMENT IS MADE WITH TIE WRAPS, TIE WIRES, OR APPROPRIATE FASTENERS.
- 2) TIE-WIRE TO BE SNUGGED UP TIGHT TO CABLE SO TO PREVENT SLIPPAGE.