

SONEX[®] HARMONI ACOUSTIC CEILING TILE DATA SHEET



DESCRIPTION

Sonex[®] Harmoni Ceiling Tiles are the natural choice when looking to combine contemporary styling with excellent acoustical control at a moderate price.

The Sonex[®] Harmoni ceiling tiles are manufactured from a Class 1 fire rated acoustic foam. Choose from a smooth flat pattern or a slightly sculpted appearance. These ceiling tiles are coated with an HPC Coated Colors for a durable clean look. Install these ceiling tiles by simply dropping them into any standard T-bar suspended ceiling grid system.

These are a perfect solution for classrooms, listening rooms, home theaters, conference rooms, retail stores and any other interior areas where ceiling tiles are used.

TECHNICAL CHARACTERISTICS

SIZE: 2' x 2'

THICKNESS: 2"

MATERIALS: Open-cell melamine-based foam

FINISH: HPC Coated

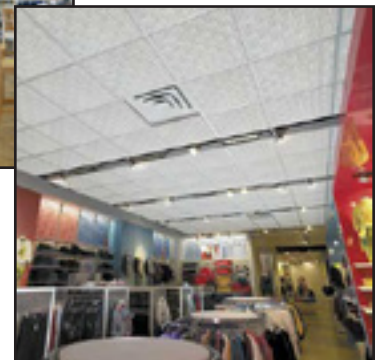
COLORS: HPC Coated Colors

PATTERN: Tartan (Sculpted)
Vista (Smooth)

FIRE RESISTANCE: Class 1 per ASTM E 84

NRC: 0.90

MOUNTING: Drops into existing T-bar ceiling grid



SOUND ABSORBING PERFORMANCE

(Per ASTM C423-90a; Mounting Type E)

125 Hz	250 Hz	500 Hz	1000 Hz	2000 Hz	4000 Hz	NRC
0.89	0.84	0.78	1.02	1.05	1.00	0.90

