

## Iso-Step<sup>®</sup> Floor Underlayment



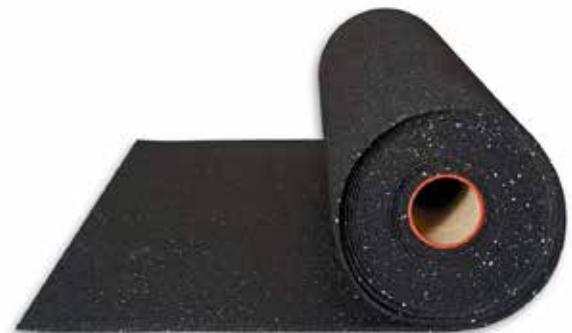
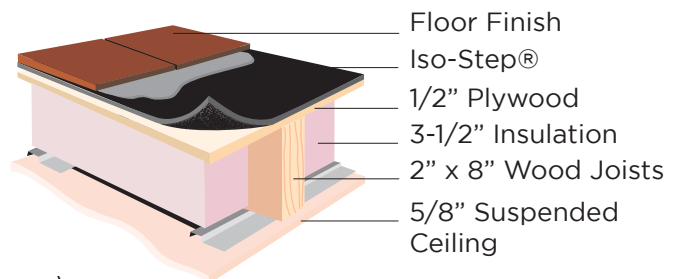
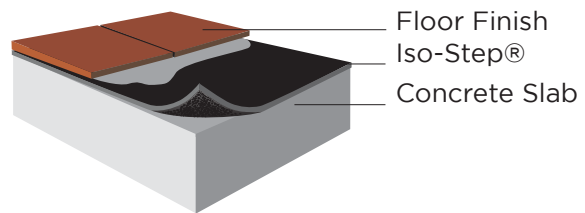
### DESCRIPTION

The Iso-Step<sup>®</sup> Floor Underlayment is engineered to provide superior impact sound insulation and better performance over other sound control mats. Installing Iso-Step<sup>®</sup> as part of your flooring assembly, short circuits impact noise to combat footfall and other structure borne sound.

Manufactured in the USA using recycled material, this rubber floor underlayment has been rigorously field tested with proven results. It can be installed under most types of grouted, glued, and floating floors, including ceramic tile, stone, marble, brick, pavers, hardwood, engineered wood, laminate, parquet, LVT, and carpet.

### TECHNICAL CHARACTERISTICS

<b>THICKNESS:</b>	2 mm, 5 mm, 10 mm, 12 mm
<b>MATERIAL:</b>	92% resilient recycled rubber
<b>DENSITY:</b>	0.72 g/ cubic cm min. (ASTM D297)
<b>TENSIL STRENGTH:</b>	80 psi, min. (ASTM D412, Die C)
<b>TEAR STRENGTH:</b>	30 ppi, min. (ASTM D624)
<b>ELONGATION:</b>	50%, min. (ASTM D412, Die C)
<b>COMPRESSION:</b>	20-30%, 85%, min. (at 100 psi recovery)
<b>COMPRESSION SET B:</b>	1 factor, max. (ASTM F147)
<b>SHORE A HARDNESS:</b>	40 durometer (ASTMD2240)
<b>FLEXIBILITY:</b>	1 factor, max. (ASTM F147)
<b>CRACK RESISTANCE:</b>	High Performance (ASTM 118.12 5.4)
<b>TOLERANCE:</b>	Width: +3/4" - 0", Length: +1% - 0", Thickness: +/- 0.3 mm



## Iso-Step<sup>®</sup> Floor Underlayment

### Technical Data Chart

Thickness	Roll Size	Roll Weight	Weight lbs/sq ft	Delta IIC*
2 mm (1/8")	4' x 75'	120 lbs	0.37	16
5 mm (1/4")	4' x 30'	100 lbs	0.84	19
10 mm (3/8")	4' x 15'	100 lbs	1.5	24
12 mm (1/2")	4' x 15'	120 lbs	1.8	25

**\*DELTA IIC ( $\Delta$ IIC):** Quantifies the performance gain between the first and second test once an underlayment is added to the assembly.



## Iso-Step<sup>®</sup> Floor Underlayment

### Acoustic Test Results of Common Assemblies

Thickness	Assembly Description	STC	IIC
2 mm	Wood flooring, 1 layer 2 mm, 8" reinforced concrete slab, suspend ceiling	72	72
2 mm	LVT (luxury vinyl tile) flooring, 1" gypsum concrete, 1 layer 2 mm, wood truss, resilient channels, suspended ceiling	63	50
5 mm	Laminate flooring, 1 layer of 5 mm, 7" reinforced concrete slab, no ceiling	55	58
5 mm	Ceramic tile, cement board, 1 layer 5 mm, wood truss, resilient channels, suspended ceiling	64	52
10 mm	Porcelain tile, 1 layer 10 mm, 8" reinforced concrete slab, no suspended ceiling	57	53
12 mm	Porcelain tile, 1 layer of 12 mm, 8" reinforced concrete slab, no suspended ceiling	57	53

**STC (Sound Transmission Class):** Quantifies the performance of a material or building partition to attenuate airborne sound. This roughly reflects the decibel reduction of a building material or partition. Higher Numbers = Higher Performance.

**IIC (Impact Insulation Class):** Quantifies the performance of a material or building partition to attenuate impact sounds, such as footsteps. Higher Numbers = Higher Performance.

