

Guilford of Maine FR701 Acoustic Fabric



Eggshell
144



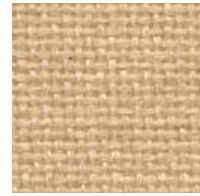
Wheat
130



Bone
748



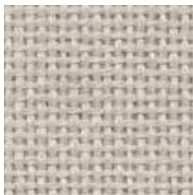
Buff
460



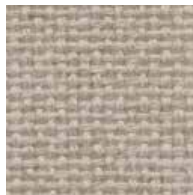
Straw
747



Quartz
380



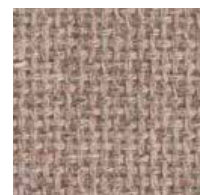
Pearl
481



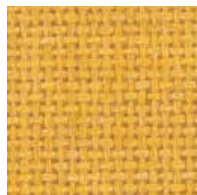
Desert Sand
758



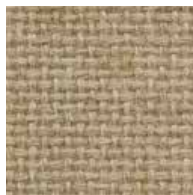
Apricot Neutral
404



Pumice
423



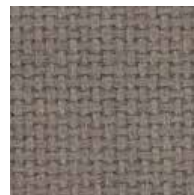
Sunshine
797



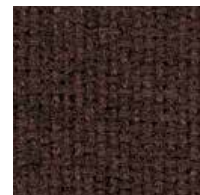
Light Moss
754



Earth
792



Moleskin
796



Chocolate
793



Dune
749



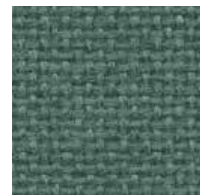
Leaf
755



Stream
757



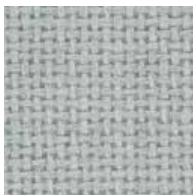
Aquamarine
381



Blue Spruce
467



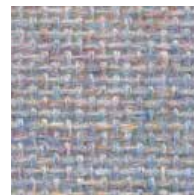
Verte Papier
561



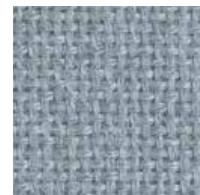
Coin
794



Blue Papier
539



Blue Neutral
401



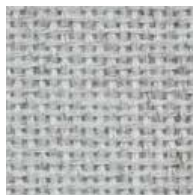
Crystal Blue
175



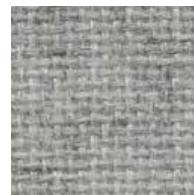
White
224*



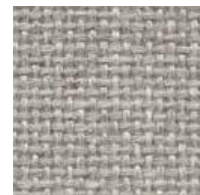
Opal
394



Silver Papier
538



Silver Neutral
406



Cement Mix
750

* Requires additional underlayment when used on acoustical panels.

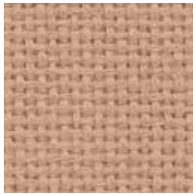
While we make every effort to make sure the colors you see here are accurate, colors may vary depending on your screen resolution and settings. Samples may be requested through the website.



Guilford of Maine FR701 Acoustic Fabric



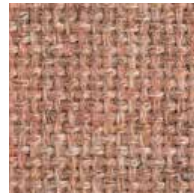
Vanilla Neutral
403



Terra
751



Cherry Neutral
400



Cinnabar
422



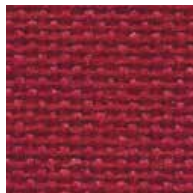
Rose Quartz
390



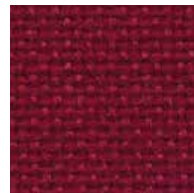
Bronze
545



Sienna
475



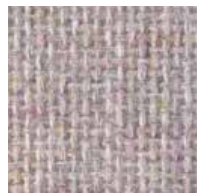
Red
799



Claret Accent
418



Deep Burgundy
556



Lavender Neutral
405



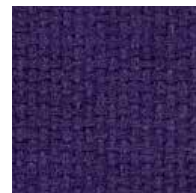
Lilac
752



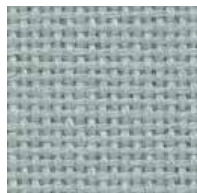
Violet
753



Amethyst
424



Iris
798



Eucalyptus
468



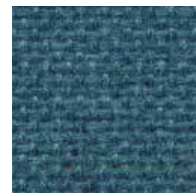
Green Neutral
402



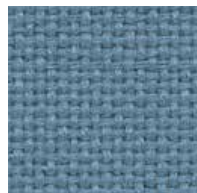
Lake
756



Chrome Green
549



Ultramarine
470



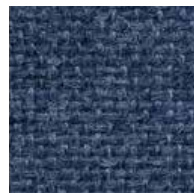
Bayberry
486



Wedgewood
150



Cobalt
420



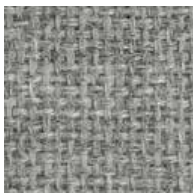
Baltic
153



Blue Plum
553



Steel Grey
471



Grey Mix
238



Flannel
795



Medium Grey
298



Black
408

While we make every effort to make sure the colors you see here are accurate, colors may vary depending on your screen resolution and settings. Samples may be requested through the website.



Guilford of Maine FR701 Acoustic Fabric

Specifications

Content

100% post-consumer recycled polyester

Weight

16.0 ± 0.5 oz./lin. yd.

Width

66" min. useable


Repeat


none


Cleaning Code


Standard Care Label W-S. Clean with water based cleaning agents, foam or pure, water free solvents. Vacuuming or light brushing is recommended to prevent dust and soil buildup.

Performance

 **Colorfastness to Light (AATCC 16 Option 3)**
Grade 4 min. at 40 hours

 **Colorfastness to Crocking (AATCC 8)**
Grade 4 min. dry & Grade 3 min. wet

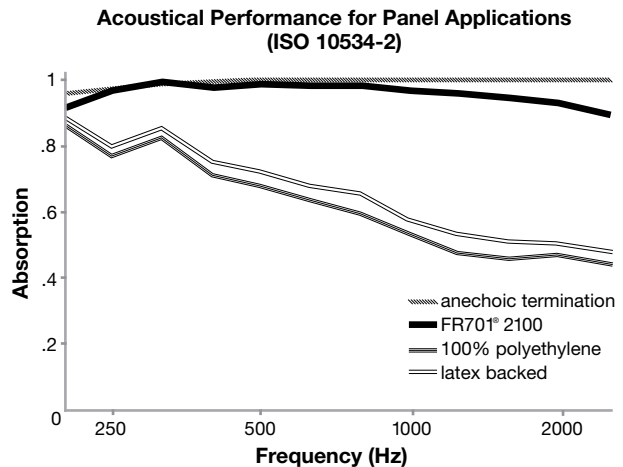
 **Breaking Strength (ASTM D5034)**
150 lbf min. warp and fill

 **Flammability (ASTM E84)**
Class I or A

*ACT[®] registered certification marks.

Acoustical Performance

The plot below summarizes impedance tube measurements of absorption of an anechoic termination and various fabrics in front of the anechoic termination.



NRC of anechoic termination
1.00

NRC of fabric in front of anechoic termination
.95

Miscellaneous

Every effort has been made to ensure color accuracy of the digital images, however, please order a sample before specification. Application testing of this product is recommended. Colors may vary between dye lots. This is a non-directional fabric.

Proudly woven in the USA supporting our local communities.

