

## Acoustic Ceiling Tiles for T-Bar Suspended Grid Systems



### GENERAL INSTALLATION

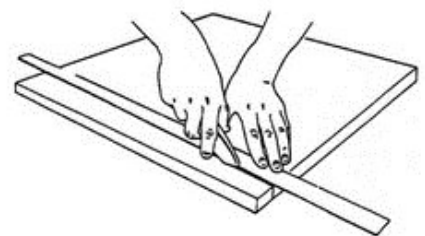
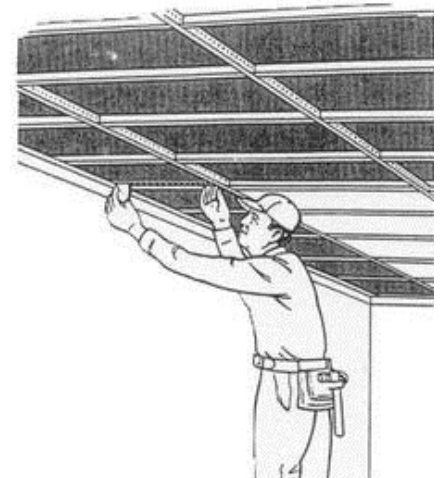
These ceiling tiles are designed to be dropped into an existing standard ceiling t-bar grid system.

**Step 1:** If the tile requires special cuts, measure your ceiling grid opening. Be sure to measure from inside to inside, then deduct 1/8" from your results. This will allow the tile to slip into the grid with ease.

**Step 2:** Lay the tile on a clean and smooth surface and mark off your measurements on the back of the tile. Use a straight edge (preferably metal) as a guide for a sharp, smooth-edge razor tool. Carefully cut the tile to size. A few passes maybe required.

**Step 3:** Slightly tilt panels above framework and simply drop the tile into your grid system and ensure a secure fit.

Lighting and other fixtures should be supported by the grid or other means, not by the acoustic ceiling tile.



**Please Note:** These installation instructions are given as a general guide to avoid common errors. Installer should follow best practices for construction and workmanship. Acoustical Solutions bears no responsibility for installation or contractor selection. Please contact a sales representative if you have questions, concerns or specific project requirements.

Be sure to inspect materials upon delivery. Please note any damage on the delivery ticket and notify Acoustical Solutions immediately. Materials should be stored in original packing in a clean, climate controlled environment free of moisture. Installation should not commence until building is enclosed and under standard occupancy conditions and surfaces are of acceptable condition and properly prepared. Do not install materials of unacceptable quality.

