

ACOUSTIC FOAM PANELS INSTALLATION GUIDE

The following installation instructions are given as a general guide to avoid common errors. Installer should follow best practices for construction and workmanship. Acoustical Solutions bears no responsibility for installation or contractor selection. Please contact a sales representative if you have questions, concerns or specific project requirements.

Be sure to inspect materials upon delivery. Please note any damage on the delivery ticket and notify Acoustical Solutions immediately. Materials should be stored in original packing in a clean, climate controlled environment free of moisture. Installation should not commence until building is enclosed and under standard occupancy conditions and surfaces are of acceptable condition and properly prepared. Do not install materials of unacceptable quality.

Ensure all surfaces are clean, dry, structurally sound and free of dust, grease, oil or other debris. During installation, be sure to maintain a constant room temperature above 50 degrees F and for best performance around 70 degrees F. Installation is best done at the end of a construction project.

CAUTION: Some panels have both a "positive" pattern and a "negative" pattern, as some panels are meant to be installed alternating the patterns. Please layout your design and make necessary design changes prior to installation.

ADHESIVE INSTALLATION

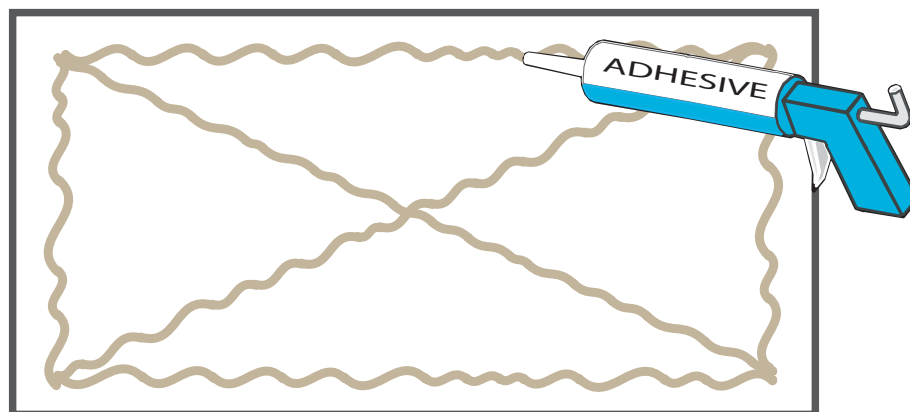
The acoustical foams offered by Acoustical Solutions may be adhered to walls, ceilings and other surfaces using a water based construction adhesive. Adhesive can be purchased from Acoustical Solutions or a local supplier. A 9-10 oz. tube of adhesive will install about 16-24 square feet of material, depending on surface conditions. Be sure to follow instruction on the tube of adhesive.

Insure both sides of the panel and the surface to which the panels are being applied are dust and dirt free. If adhering to a metal surface use a degreaser. For optimal adhesion, glossy surfaces may need to be sanded. Cut end of adhesive tube to produce a 1/4" bead. Apply a 1/4" bead of adhesive around the perimeter of the panel approximately 1" from the edge. Apply a 1/4" bead of adhesive from opposite corners through the center of the panel, creating an "X."

CAUTION: If you apply the adhesive too close to the edge it can squeeze out when the tile is pressed into place.

If you apply the adhesive more than 1" away from the edge, the tile may not properly bond against the hanging surface. Press panel into place and hold for 5 seconds. If necessary, pull panel away from the surface for 1 minute to allow adhesive to become tacky. Press the panel back into position and hold again for 5 seconds.

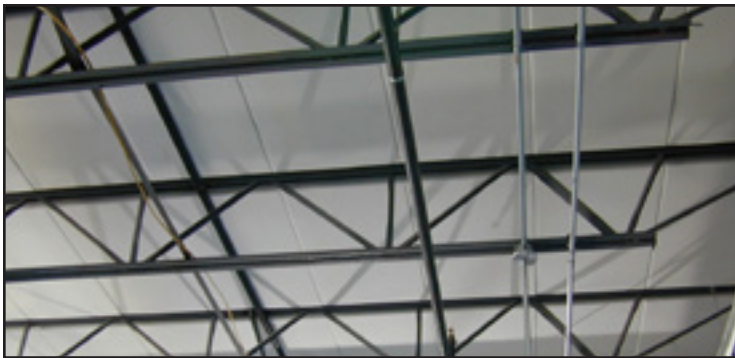
NOTE: Acoustical foam may expand or contract depending on the climate conditions of the room. Leaving a small reveal between adjacent panels will compensate for these environmental changes.



ACOUSTIC FOAM PANELS INSTALLATION GUIDE

SPRAY ADHESIVE INSTALLATION

Spray adhesive is useful when a quick tack time is desired. This is often useful for direct ceiling mount applications. Spray both the foam and the surface to which it will mount. Be sure the position of the foam is correct as spray adhesive sets quickly and does not allow for easy repositioning of the material.



METAL ROOF DECK / CEILING INSTALLATION GUIDE

3M 90 High Strength Spray adhesive or similar works best for applications of this nature due to its quick tack time. Acoustical foam can be cut using a non-serrated edge knife.



Shoulder and circular cut-outs made to suit panel conditions between open web joists. 2-inch thick panels can be back-cut extensively to fit over top bundled wiring and open web joist flange.



Once the panel has been properly fit to the deck, the back of the panel is totally spray coated using Hi Strength spray adhesive.



ACOUSTIC FOAM PANELS INSTALLATION GUIDE



Apply spray adhesive to suit panel-to-panel, butt-edge conditions.



Underside of metal deck ribs are sprayed twice for best tack and secure bond.



Wearing white cotton gloves and patting evenly across the panel face up towards the metal deck ribs beyond insures best bond between surfaces.

