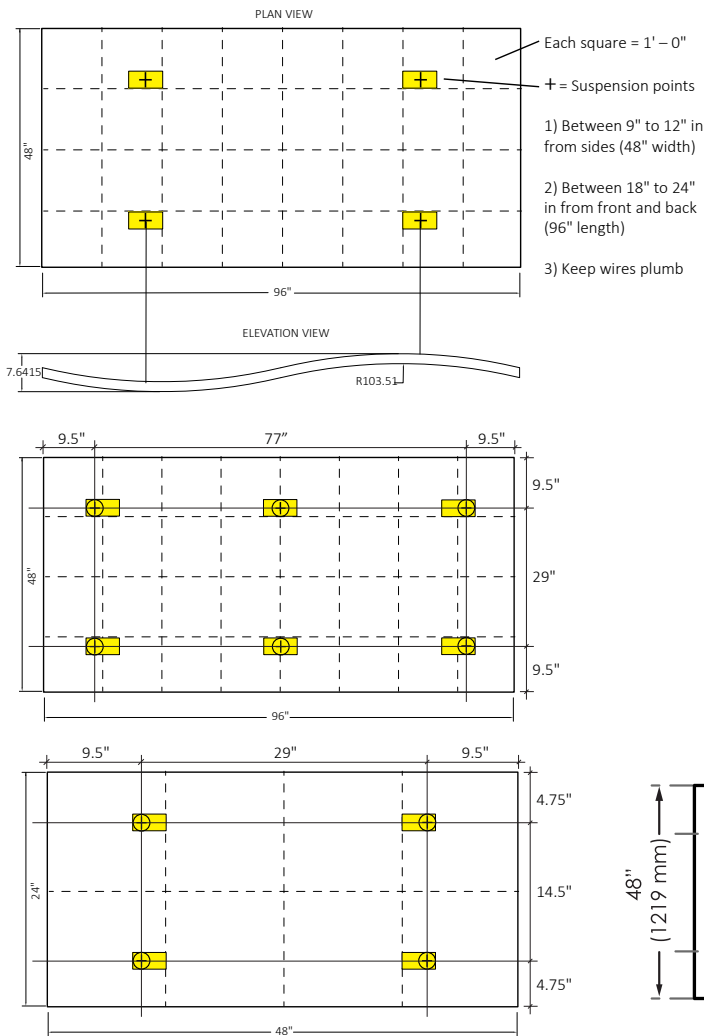


## Acoustic Foam Ceiling Cloud



Four points are usually all that is necessary to suspend 2'x4' or 4'x4' ceiling clouds in place. Six points may be used for 4'x8' clouds. Keep corkscrews, hanger wires and anchors overtop in exact alignment, true and plumb.

To Find the approximate distances away from the sides to install the corkscrew hangers, multiply the width and length by 0.20

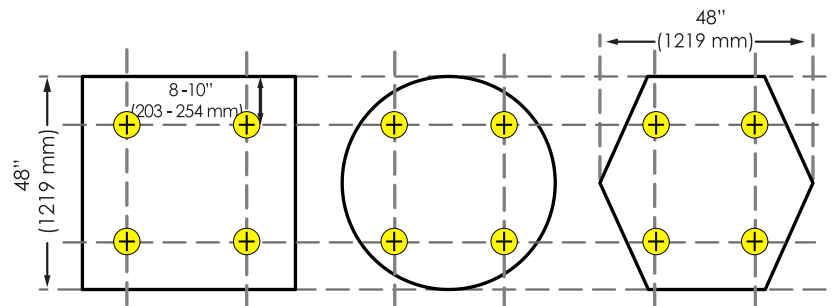


### Install Corkscrew Hangers

-Center the corkscrew hanger over the suspension point. Holding the hanger vertically, press down lightly and turn.

-Allow the downward pressure to pierce the foam. Do not poke the hanger point into the foam. If necessary, spray hanger with dry lubricant.

-Turn the corkscrew hanger clockwise until it is completely seated and the top coil of the hanger is touching the surface of the cloud.



The following installation instructions are given as a general guide to avoid common errors. Installer should follow best practices for construction and workmanship. Acoustical Solutions bears no responsibility for installation or contractor selection. Please contact a sales representative if you have questions, concerns or specific project requirements.

Be sure to inspect materials upon delivery. Please note any damage on the delivery ticket and notify Acoustical Solutions immediately. Materials should be stored in original packing in a clean, climate controlled environment free of moisture. Installation should not commence until building is enclosed and under standard occupancy conditions and surfaces are of acceptable condition and properly prepared. Do not install materials of unacceptable quality.

**Note: Corkscrew Hangers Sold Separately**

