

Weather Resistant | Exterior Panels

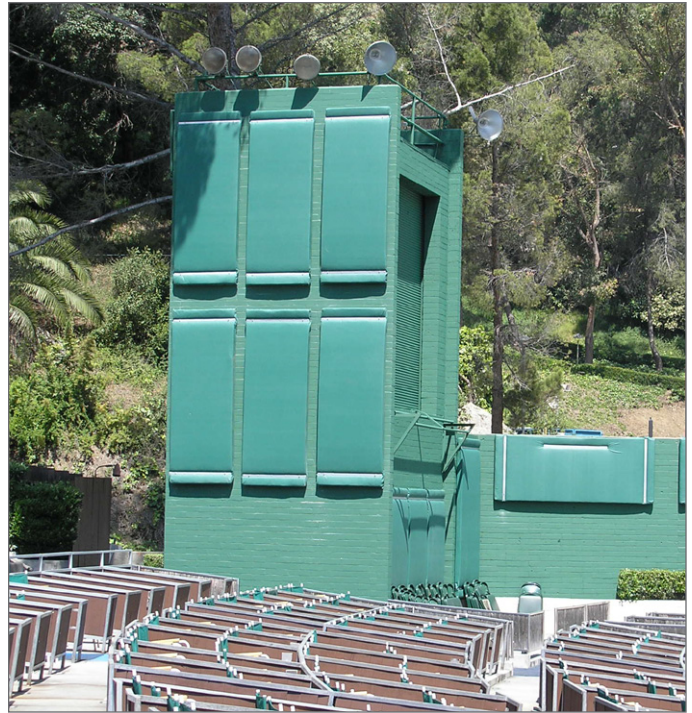
PRODUCT DESCRIPTION

Weather Resistant Exterior Acoustical Panels are intended for outdoor applications such as amphitheaters, pavilions, amusement facilities, noise enclosures, and transportation noise barriers.

Sound traveling at 768 miles per hour will reflect and ricochet off hard surfaces producing excessive reverberation (echo) within the space. Extensive testing has shown that Weather Resistant Exterior Panels reduce reverberation times by 1/2 to 5 seconds and sound intensity levels 2 to 12 decibels.

Made with durable Cypress exterior fabric, these panels will withstand the elements and the effects of excessive temperature changes.

These highly effective acoustical products are Class B, lightweight, cost efficient, and easy to install.



ACOUSTICAL PERFORMANCE

PRODUCT MODEL	ABSORPTION COEFFICIENT						
	125	250	500	1000	2000	4000	NRC
Cypress Baffle	In Sabins per 4' x 2' Unit						
5000W-2065-GGF (2" x 1.65# Core, Solid Cypress Fabric)	1.82	4.96	11.45	7.83	6.10	5.94	0.95
5000WP-2065-GGF (2" x 1.65# Core, 0.50 mil PVC Underliner, Cypress Fabric Perf. Both Sides)	2.35	5.87	10.86	13.07	12.48	10.62	1.32
Cypress Banner	E 400 Mounting						
5000WP-2075-S (2" x 3/4# Core, Perf. Cypress Fabric)	0.91	0.66	0.91	1.02	0.87	0.85	0.85
Cypress Panel	Type A Mounting						
5000W-2065-WS (2" x 1.65# Core, 0.50 mil PVC Underliner, Solid Cypress Fabric)	0.34	0.88	1.09	0.62	0.43	0.37	0.75
5000WP-2065-WS (2" x 1.65# Core, 0.50 mil PVC Underliner, Perf. Cypress Fabric)	0.41	0.84	1.14	1.10	0.97	0.86	1.00

CODES & CERTIFICATES

- ★ Class B, For Outdoor Use
- ★ Meets California State Fire Marshal requirements for flame retardancy: Title 19, CPAI-84 (Section 6), FMVSS-302 and NFPA 701

WEATHER RESISTANT ACOUSTICAL PANELS

TECHNICAL SUPPORT

- **Weight:** 0.25# - 0.40# per square foot
- **Density:** 3/4#, 1.65#
- **Shape:** Rectangular
- **Fire Rating:** Class B, for outdoor use
- **Dimensional Stability:** Weather Resistant products are dimensionally stable
- **Maintenance:** Materials selected to provide easy maintenance, durability and abuse resistance

SIZES AVAILABLE

- Thickness of 2" through 4"
- Custom sizes in widths up to 4' and lengths up to 20'

FINISHES AND MATERIALS

- Cypress Exterior Fabric
 - ♦ 19 colors available (see color card)
 - ♦ Pigmented and acrylic top coated
 - ♦ Average tensile strength of 249 lbs.
 - ♦ Water and mildew resistant
 - ♦ Available solid or perforated

SUSPENSION PROVISIONS

- Factory installed nickel plated brass or non-corrosive, stainless steel grommets for suspension
- Grommets in 2" flap for wrinkle-free appearance
- Anodized Aluminum Stiffener/Gripper Bars
- Washer Plates for direct attachment
- Stainless Steel and PVC Coated tie wire for connecting baffles to suspension system
- Cable, Crimps, Clamps and Turnbuckles



Weather Resistant Baffle with Grommets in Panel



Weather Resistant Panel with Aluminum Stiffener/Gripper Bar

GENERAL NOTES

- Suspension hardware should not be pre-installed. Grommet locations will vary from size to size
- Due to the nature of this product, some wrinkling and puckering is common and unavoidable
- Constructed from a soft and flexible fiberglass core
- Field cutting is not recommended
- Before installing, please request copies of installation drawings and details

