

ROTOFAST™ POLYESTER SNAP-ON ANCHOR INSTALLATION GUIDE



STEP 1

Measure and mark the location where panel will be placed and mark the orientation on the back of the panel.



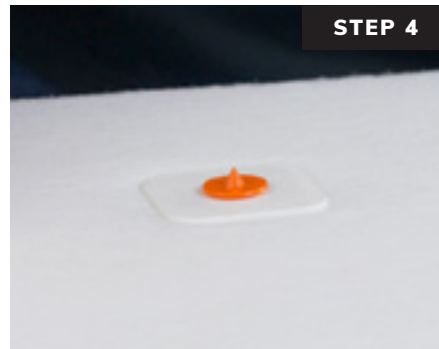
STEP 2

Make a cut about 1-1/2" long by 3/4" deep at each anchor location. It may take a few passes to complete the cut.



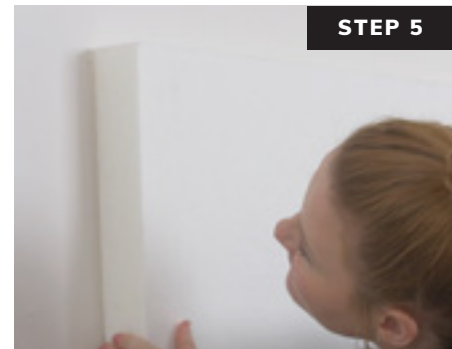
STEP 3

Screw Rotofast Snap-On Anchors into back of the panel using the Rotofast driver tool. Do not over-tighten.



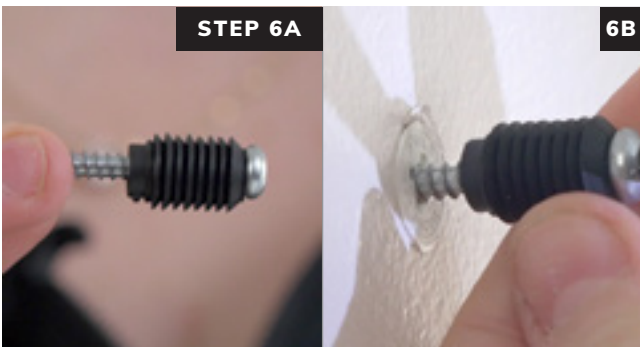
STEP 4

Insert reusable marking plugs into the Snap-On anchors.



STEP 5

Push panel against wall to mark anchor locations.



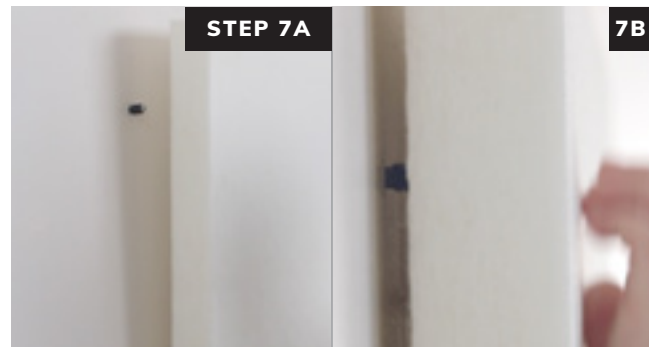
STEP 6A

6B

Screw ratchets to wall at marked locations. Flat end of ratchet goes against the wall, curved end faces out.

#8 screws recommended

*Hollow wall anchors are recommended for drywall applications.



STEP 7A

7B

Firmly strike panel onto ratchets to complete the installation.

Ask your panel manufacturer or Rotofast representative for recommended anchor locations and quantities per panel.

