

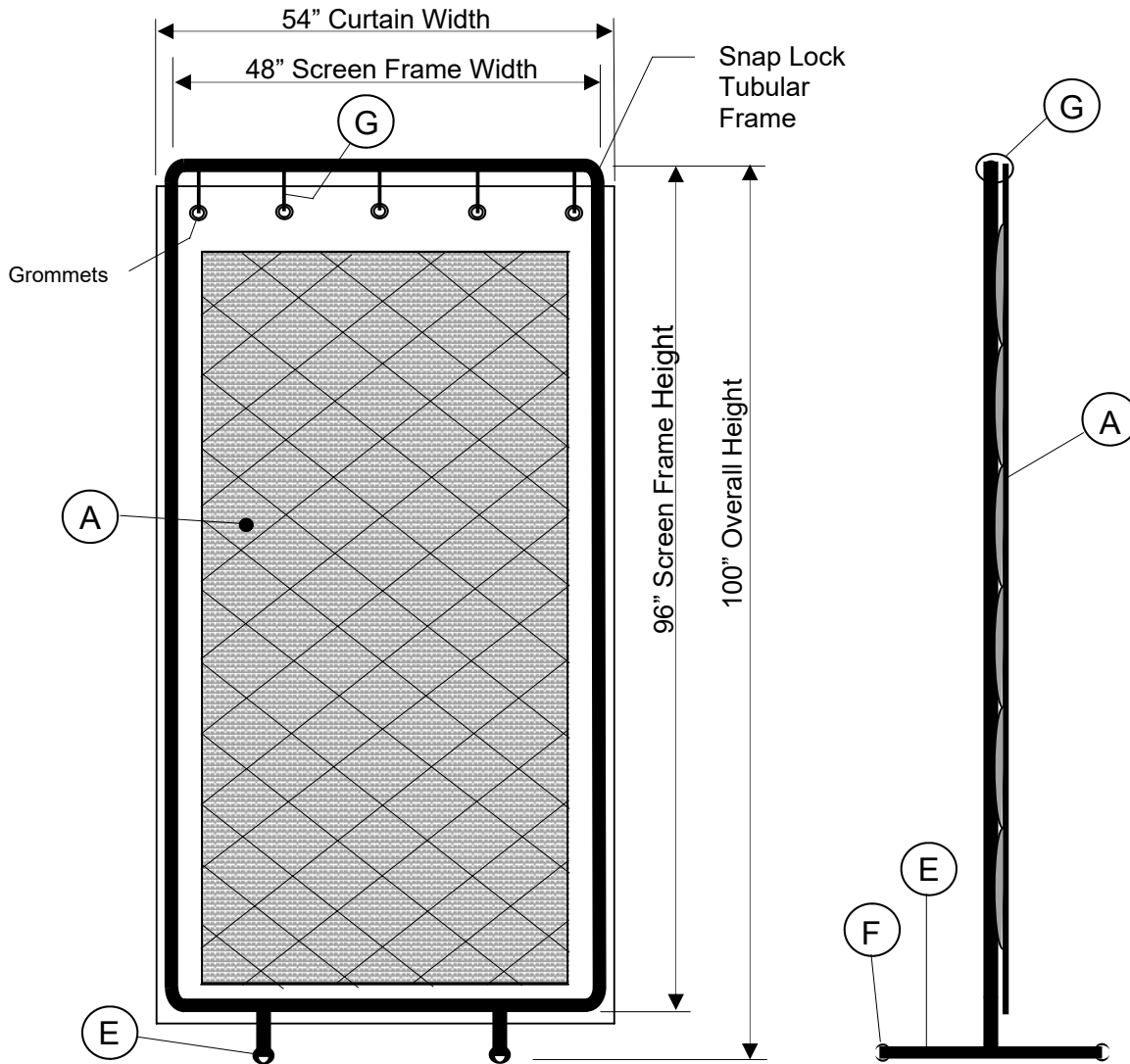
## PRIVACYSHIELD<sup>®</sup> ABSORPTIVE SOUNDPROOFING BLANKET PARTITION INSTALL GUIDE

The following installation instructions are given as a general guide to avoid common errors. Installer should follow best practices for construction and workmanship. Acoustical Solutions bears no responsibility for installation or contractor selection. Please contact a sales representative if you have questions, concerns or specific project requirements.

Be sure to inspect materials upon delivery. Please note any damage on the delivery ticket and notify Acoustical Solutions immediately. Materials should be stored in original packing in a clean, climate controlled environment free of moisture. Installation should not commence until building is enclosed and under standard occupancy conditions and surfaces are of acceptable condition and properly prepared. Do not install materials of unacceptable quality.



**PRIVACYSHIELD<sup>®</sup> ABSORPTIVE SOUNDPROOFING BLANKET PARTITION INSTALL GUIDE**

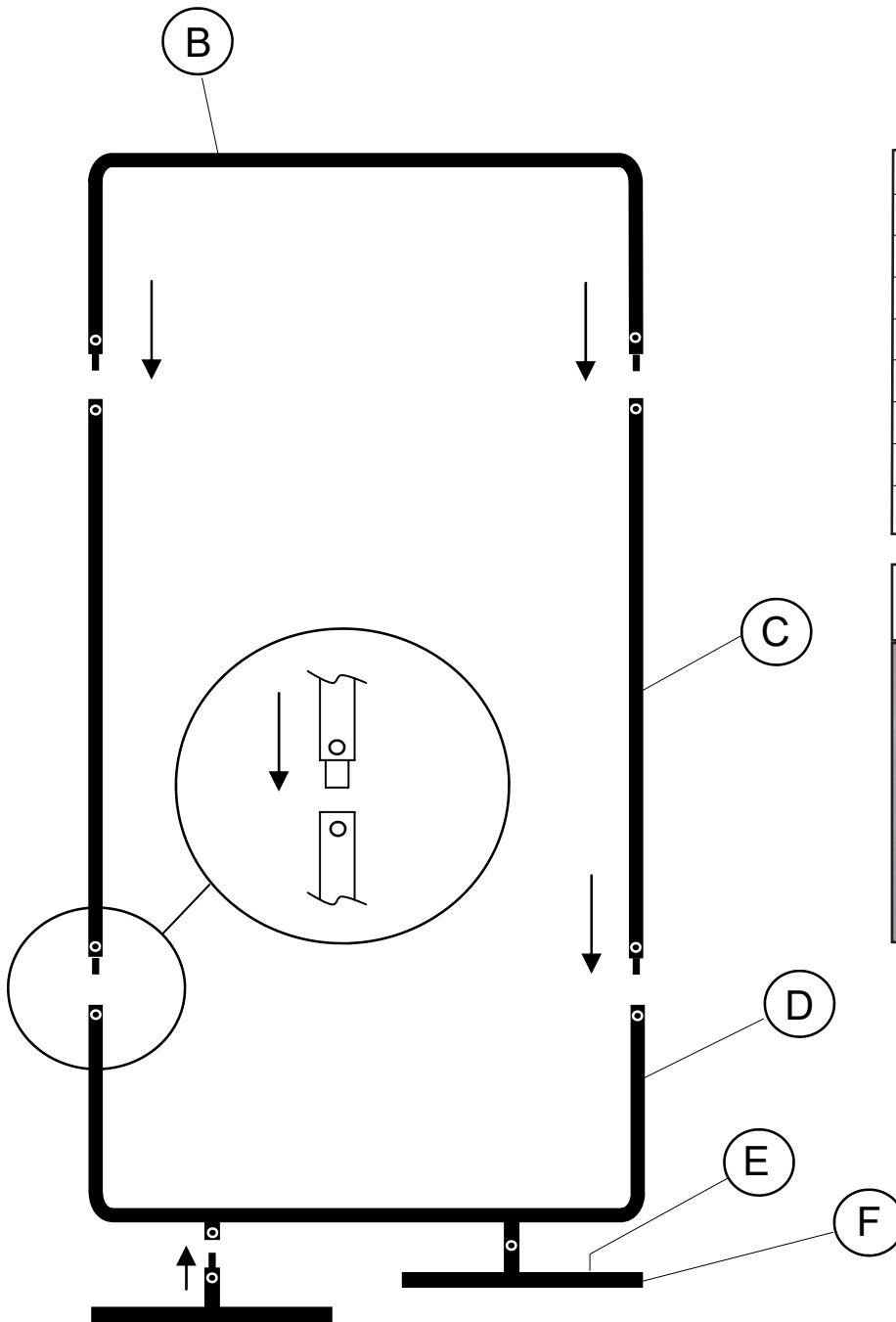


**STANDARD SCREEN ASSEMBLY**  
Shown With Composite Curtain

ITEM	QTY	DESCRIPTION
A	1	Acoustical Curtain Panel
B	1	TOP Frame Section
C	2	SIDE Frame Section
D	1	BOTTOM Frame Section
E	2	Adjustable Feet
F	4	Caps for Feet
G	4	Nylon Tie Straps
H	7	Nylon Fastener Sets



**PRIVACYSHIELD<sup>®</sup> ABSORPTIVE SOUNDPROOFING BLANKET PARTITION INSTALL GUIDE**



**SNAP-LOCK FRAME ASSEMBLY**

ITEM	QTY	DESCRIPTION
A	1	Acoustical Curtain Panel
B	1	TOP Frame Section
C	2	SIDE Frame Section
D	1	BOTTOM Frame Section
E	2	Adjustable Feet
F	4	Caps for Feet
G	4	Nylon Tie Straps
H	7	Nylon Fastener Sets

Optional casters mount through a hole in the adjustable feet (E).



Assemble as shown in the diagram on the left.

Use the nylon zip ties to secure the blanket to the frame using the grommets at the top of the panel.

