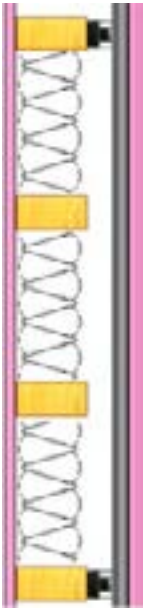


RESILIENT SOUND ISOLATION CLIPS (RSIC-1) ASSEMBLY EXAMPLES

WOOD ASSEMBLIES (TYPICAL)



DIRECT TO WOOD STUD

- 5/8" GYPSUM
- 7/8" x 25 gauge furring Channel @ 24" O.C.
- RSIC-1 clip at 48" O.C.
- 2'X4' wood studs @ 16" O.C.
- 3.5" unfaced fiberglass insulation
- 5/8" GYPSUM

STC = 55



DIRECT TO WOOD STUD

- 5/8" GYPSUM
- 7/8" x 25 gauge furring Channel @ 24" O.C.
- RSIC-1 clip @ max 24" x 48" O.C.
- 2'X4' wood studs @ 16" O.C.
- 6" fiberglass batt insulation
- 5/8" GYPSUM

STC = 58



DIRECT TO WOOD STUD

- 5/8" GYPSUM
- 7/8" x 25 gauge furring Channel @ 24" O.C.
- RSIC-1 clip at 48" O.C.
- 2'X4' wood studs @ 16" O.C.
- 6" unfaced fiberglass insulation
- 5/8" GYPSUM

STC = 56



DIRECT TO WOOD STUD

- (2) layers 5/8" GYPSUM
- 7/8" x 25 gauge furring Channel @ 24" O.C.
- RSIC-1 clip at 48" O.C.
- 2'X4' wood studs @ 16" O.C.
- 6" unfaced fiberglass insulation
- (2) layers 5/8" GYPSUM

STC = 62



RESILIENT SOUND ISOLATION CLIPS (RSIC-1) ASSEMBLY EXAMPLES

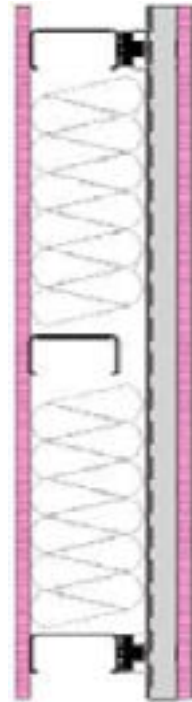
STEEL ASSEMBLIES (TYPICAL)



DIRECT TO STEEL STUD

- 5/8" GYPSUM
- 7/8" x 25 gauge furring Channel
- RISC-1 clip at 48" O.C.
- 2.5" Steel Stud @ 16" O.C.
- 3.5" fiberglass insulation
- 5/8" GYPSUM

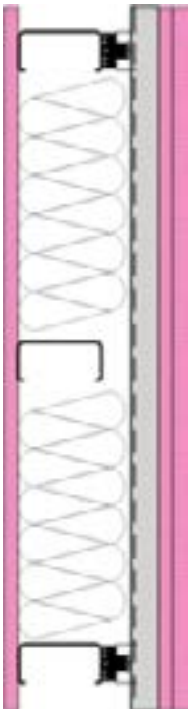
STC = 56



DIRECT TO STEEL STUD

- 5/8" GYPSUM
- 7/8" x 25 gauge furring Channel
- RISC-1 clip at 48" O.C.
- 3.5" Steel Stud @ 24" O.C.
- 5.5" fiberglass insulation
- 5/8" GYPSUM

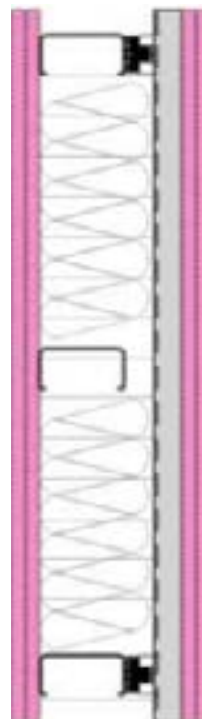
STC = 58



DIRECT TO STEEL STUD

- (2) layers 5/8" GYPSUM
- 7/8" x 25 gauge furring Channel
- RISC-1 clip at 48" O.C.
- 3.5" Steel Stud @ 24" O.C.
- 5.5" fiberglass insulation
- 5/8" GYPSUM

STC = 61



DIRECT TO STEEL STUD


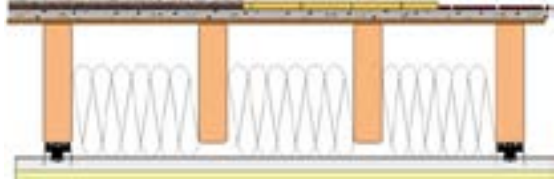
- (2) layers 5/8" GYPSUM
- 7/8" x 25 gauge furring Channel
- RISC-1 clip at 48" O.C.
- 3.5" Steel Stud @ 24" O.C.
- 5.5" fiberglass insulation
- (2) layers 5/8" GYPSUM


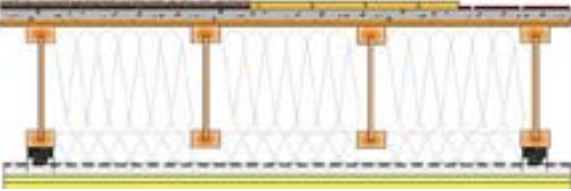
STC = 64




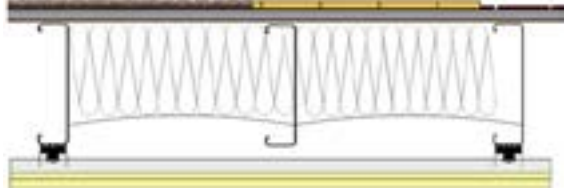
RESILIENT SOUND ISOLATION CLIPS (RSIC-1) ASSEMBLY EXAMPLES

RSIC-1 WOOD/FLOOR CEILING ASSEMBLIES 1 & 2 HOUR

Carpet	STC 61	IIC 74		
Hard Wood	STC 61	IIC 55		
Tile	STC 61	IIC 53		
(Open Web Truss)				

Carpet	STC 61	IIC 74		
*Hard Wood	STC 61	FIIC 60		
Tile	STC 61	FIIC 63		
* No Acoustical Underlayment Installed F = Indicates Field Test				

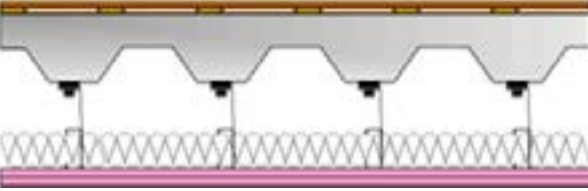
RSIC-1 STEEL CEILING ASSEMBLIES 1 & 2 HOUR

Carpet	STC 60	IIC 70		
Hard Wood	STC 60	IIC 60		
Tile	STC 60	FIIC 59		
F = Indicates Field Test				

RSIC-1 CONCRETE CEILING ASSEMBLIES 1 & 2 HOUR

Carpet	STC 60	FIIC 84	
Hard Wood	STC 60	FIIC 74	
Tile	STC 60	FIIC 70	
Bare	STC 60	FIIC 51	
F = Indicates Field Test			

RSIC-1 STEEL & CONCRETE CEILING ASSEMBLIES 1 & 2 HOUR

Hard Wood	STC 60	FIIC 74	
F = Indicates Field Test			


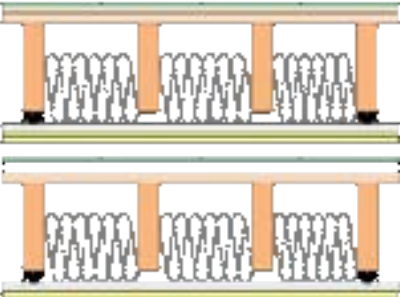

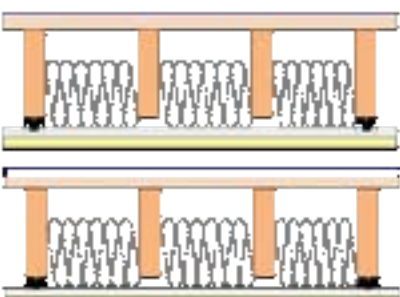

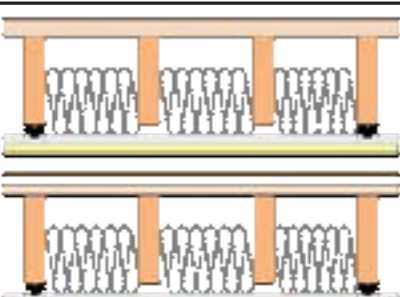



RESILIENT SOUND ISOLATION CLIPS (RSIC-1) ASSEMBLY EXAMPLES

RSIC-1 WOOD/FLOOR CEILING ASSEMBLIES 1 & 2 HOUR

The Lowest Cost Floor-Ceiling System using RSIC technology.

Our research team has developed a breakthrough Floor-Ceiling design which eliminates the need for Light Weight Gypsum Concrete and Acoustical Mats, while exceeding code for both Fire and Sound.

<p> UL L502, L513, L514, L516,L325, L569, L590, L593</p> <p>RSIC-1 Ceramic Tile system w/o Light Weight Gypsum Concrete</p> <p>Tile: STC 57 IIC 56 RAL IN08-018</p> <p>RSIC-1 Ceramic Tile system with Light Weight Gypsum Concrete</p> <p>Tile: STC 55 IIC 53 RAL IN09-011</p>	
<p> UL L502, L513, L514, L516,L325, L569, L590, L593</p> <p>RSIC-1 Vinyl system w/o Light Weight Gypsum Concrete</p> <p>Tile: STC 57 IIC 52 RAL IN08-016</p> <p>RSIC-1 Vinyl system with Light Weight Gypsum Concrete</p> <p>Tile: STC 55 IIC 54 RAL IN09-009</p>	
<p> UL L502, L513, L514, L516,L325, L569, L590, L593</p> <p>RSIC-1 Laminate Wood system w/o Light Weight Gypsum Concrete</p> <p>Tile: STC 57 IIC 52 RAL IN08-016</p> <p>RSIC-1 Laminate Wood system with Light Weight Gypsum Concrete</p> <p>Tile: STC 55 IIC 54 RAL IN09-012</p>	
<p> UL L502, L513, L514, L516,L325, L569, L590, L593</p> <p>RSIC-1 Carpet system w/o Light Weight Gypsum Concrete</p> <p>Tile: STC 57 IIC 77 RAL IN08-017</p> <p>RSIC-1 Carpet system With Light Weight Gypsum Concrete</p> <p>Tile: STC 55 IIC 78 RAL IN09-010</p>	