

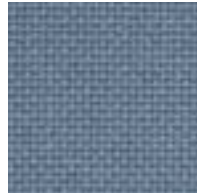
GUILFORD OF MAINE FR701 ACOUSTIC FABRIC COLOR CHART



AMETHYST
424



BALTIC
153



BAYBERRY
486



BLACK
408



BLUE NEUTRAL
401



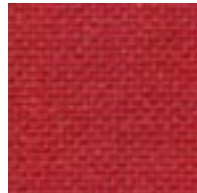
BLUE PAPIER
539



BLUE PLUM
553



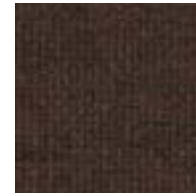
BONE
748



CARDINAL
738



CEMENT MIX
750



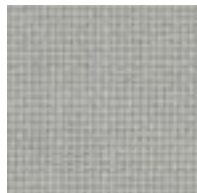
CHOCOLATE
793



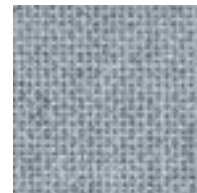
CLARET ACCENT
418



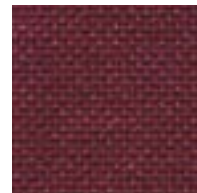
COBALT
420



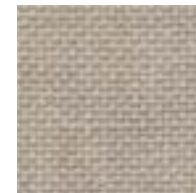
COIN
794



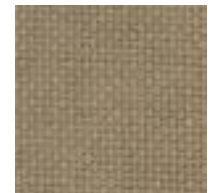
CRYSTAL BLUE
175



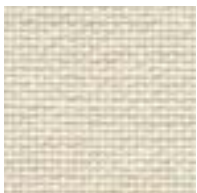
DEEP BURGUNDY
556



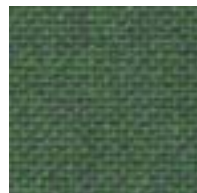
DESERT SAND
758



EARTH
792



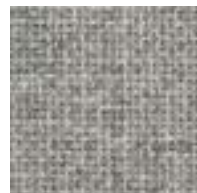
EGGSHELL
144



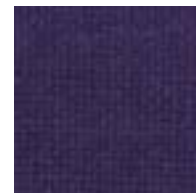
FIR
743



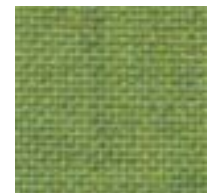
FLANNEL
795



GREY MIX
238



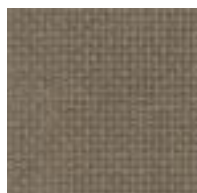
IRIS
798



LIME
721



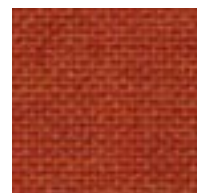
MEDIUM GREY
298



MOLESKIN
796



OPAL
394



ORANGE
746



PEARL
481



QUARTZ
380

While we make every effort to make sure the colors you see here are accurate, colors may vary depending on your screen resolution and settings. Samples may be requested through the website.



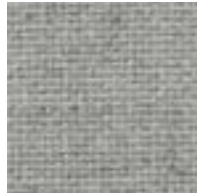
GUILFORD OF MAINE FR701 ACOUSTIC FABRIC COLOR CHART



RED
799



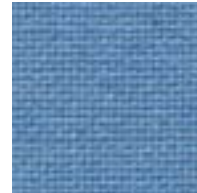
SAPPHIRE
745



SILVER NEUTRAL
406



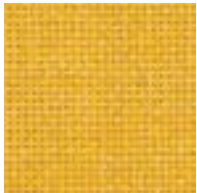
SILVER PAPIER
538



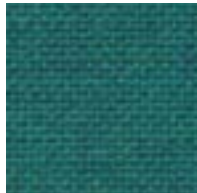
SKY
740



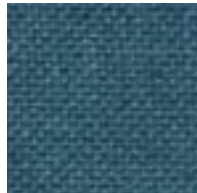
STEEL GREY
471



SUNSHINE
797



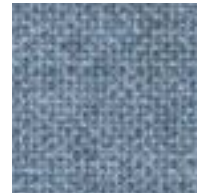
TEAL
742



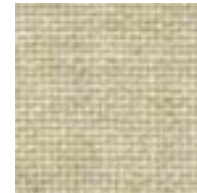
ULTRAMARINE
470



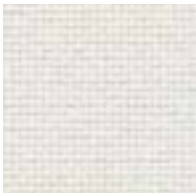
VERTE PAPIER
561



WEDGEWOOD
150



WHEAT
130



WHITE
224



YELLOW
744

While we make every effort to make sure the colors you see here are accurate, colors may vary depending on your screen resolution and settings. Samples may be requested through the website.



GUILFORD OF MAINE FR701 ACOUSTIC FABRIC COLOR CHART

Specifications

Content

100% post-consumer recycled polyester

Weight

16.0 ± 0.5 oz./lin. yd.

Width

66" min. useable


Repeat


none


Cleaning Code


Standard Care Label W-S. Clean with water based cleaning agents, foam or pure, water free solvents. Vacuuming or light brushing is recommended to prevent dust and soil buildup.

Performance

 **Colorfastness to Light (AATCC 16 Option 3)**
Grade 4 min. at 40 hours

 **Colorfastness to Crocking (AATCC 8)**
Grade 4 min. dry & Grade 3 min. wet

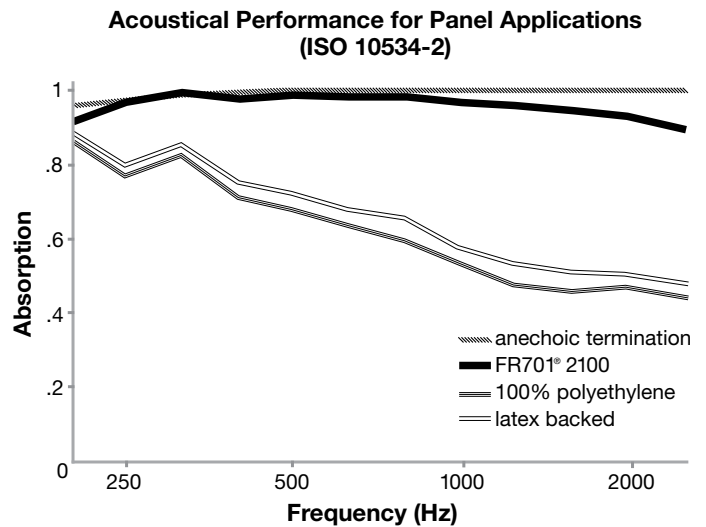
 **Breaking Strength (ASTM D5034)**
150 lbf min. warp and fill

 **Flammability (ASTM E84)**
Class I or A

*ACT[®] registered certification marks.

Acoustical Performance

The plot below summarizes impedance tube measurements of absorption of an anechoic termination and various fabrics in front of the anechoic termination.



NRC of anechoic termination
1.00

NRC of fabric in front of anechoic termination
.95

Miscellaneous

Every effort has been made to ensure color accuracy of the digital images, however, please order a sample before specification. Application testing of this product is recommended. Colors may vary between dye lots. This is a non-directional fabric.

Proudly woven in the USA supporting our local communities.

