



**GUILFORD OF MAINE FR701 ACOUSTIC FABRIC COLOR CHART**



**AMETHYST**  
424



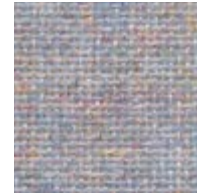
**BALTIC**  
153



**BAYBERRY**  
486



**BLACK**  
408



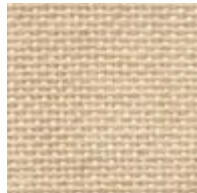
**BLUE NEUTRAL**  
401



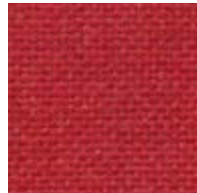
**BLUE PAPIER**  
539



**BLUE PLUM**  
553



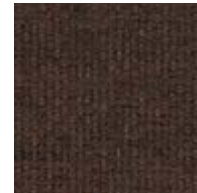
**BONE**  
748



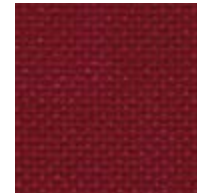
**CARDINAL**  
738



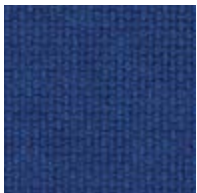
**CEMENT MIX**  
750



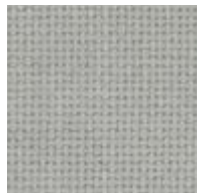
**CHOCOLATE**  
793



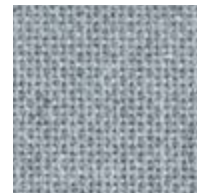
**CLARET ACCENT**  
418



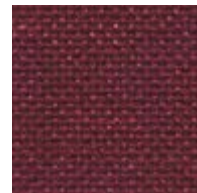
**COBALT**  
420



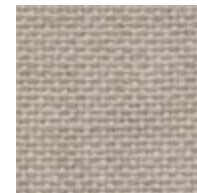
**COIN**  
794



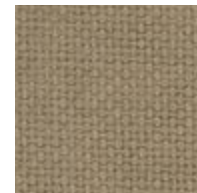
**CRYSTAL BLUE**  
175



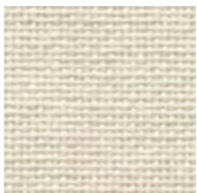
**DEEP BURGUNDY**  
556



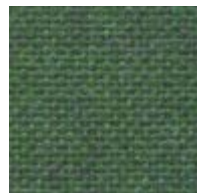
**DESERT SAND**  
758



**EARTH**  
792



**EGGSHELL**  
144



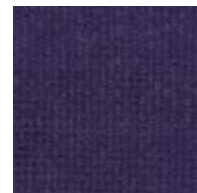
**FIR**  
743



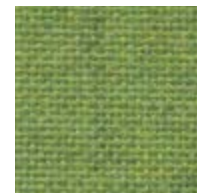
**FLANNEL**  
795



**GREY MIX**  
238



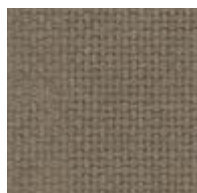
**IRIS**  
798



**LIME**  
721



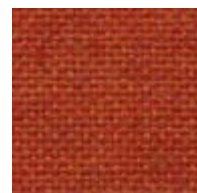
**MEDIUM GREY**  
298



**MOLESKIN**  
796



**OPAL**  
394



**ORANGE**  
746



**PEARL**  
481



**QUARTZ**  
380

While we make every effort to make sure the colors you see here are accurate, colors may vary depending on your screen resolution and settings. Samples may be requested through the website.



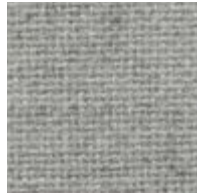
**GUILFORD OF MAINE FR701 ACOUSTIC FABRIC COLOR CHART**



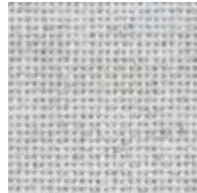
**RED**  
799



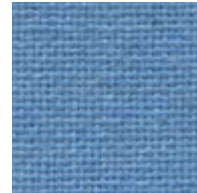
**SAPPHIRE**  
745



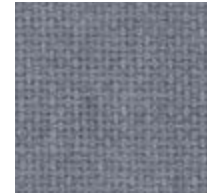
**SILVER NEUTRAL**  
406



**SILVER PAPIER**  
538



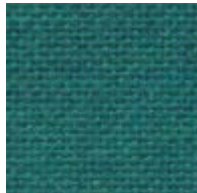
**SKY**  
740



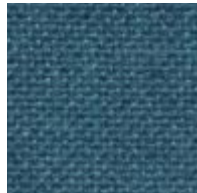
**STEEL GREY**  
471



**SUNSHINE**  
797



**TEAL**  
742



**ULTRAMARINE**  
470



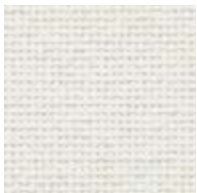
**VERTE PAPIER**  
561



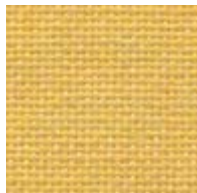
**WEDGEWOOD**  
150



**WHEAT**  
130



**WHITE**  
224



**YELLOW**  
744

While we make every effort to make sure the colors you see here are accurate, colors may vary depending on your screen resolution and settings. Samples may be requested through the website.



## GUILFORD OF MAINE FR701 ACOUSTIC FABRIC COLOR CHART

### Specifications

#### Content

100% post-consumer recycled polyester

#### Weight

16.0 ± 0.5 oz./lin. yd.

#### Width

66" min. useable


#### Repeat


none


### Cleaning Code


Standard Care Label W-S. Clean with water based cleaning agents, foam or pure, water free solvents. Vacuuming or light brushing is recommended to prevent dust and soil buildup.

### Performance

 **Colorfastness to Light (AATCC 16 Option 3)**  
Grade 4 min. at 40 hours

 **Colorfastness to Crocking (AATCC 8)**  
Grade 4 min. dry & Grade 3 min. wet

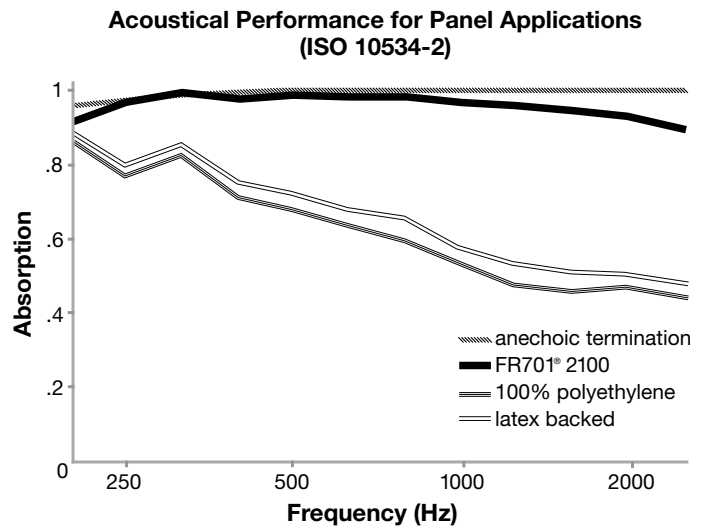
 **Breaking Strength (ASTM D5034)**  
150 lbf min. warp and fill

 **Flammability (ASTM E84)**  
Class I or A

\*ACT<sup>®</sup> registered certification marks.

### Acoustical Performance

The plot below summarizes impedance tube measurements of absorption of an anechoic termination and various fabrics in front of the anechoic termination.



**NRC of anechoic termination**  
1.00

**NRC of fabric in front of anechoic termination**  
.95

### Miscellaneous

Every effort has been made to ensure color accuracy of the digital images, however, please order a sample before specification. Application testing of this product is recommended. Colors may vary between dye lots. This is a non-directional fabric.

Proudly woven in the USA supporting our local communities.

